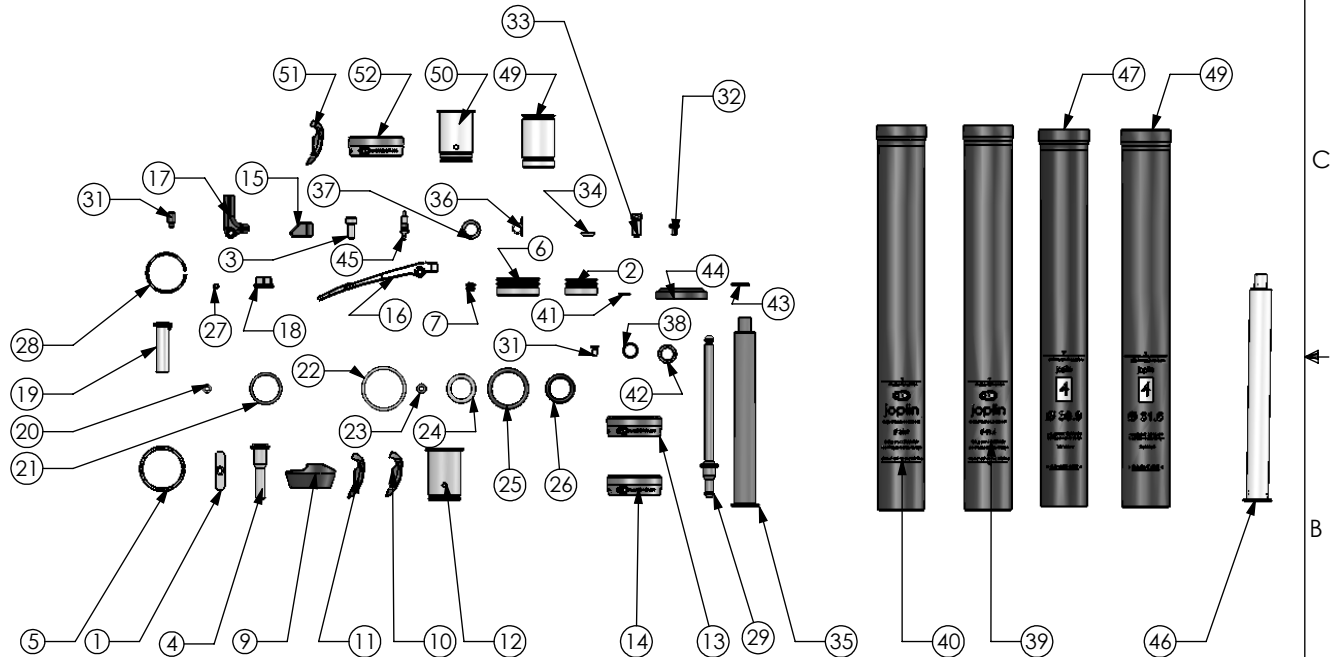


COPYRIGHT © 2009 BY SELLE ROYAL GROUP  
These drawings, any and all specifications and data herein contained and the products manufactured in accordance with the said drawings, specifications and data are the exclusive property of Selle Royal Group of Pozzoleone (Vicenza) Italy, in accordance with the provisions of the National laws and International Conventions for the protection of Intellectual Property. No disclosure, copy, use, manufacture, advertising, and sale of the said drawings, specifications, data and products are permitted without the prior written consent of Selle Royal Group

REVISION TABLE					
ZONE	REVISION	DESCRIPTION	DATE	APPROVED	PCN #
-	- 01	PRELIMINARY RELEASE	8/21/09	CRB	-
-	- 02	UPDATED PARTS AT JOSH AND TMS REQUEST	12/15/10	CRB	-

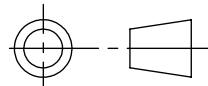
ITEM #	CB SKU #	NAME	QTY.
1	10317	BLOCK, ASP GUIDE	20
2	10335	BODY, VALVE	2
3	10344	BOLT, 4X10	2
4	10325	BOLT, RAIL CLAMP	2
5	10313	BUSHING, ASP UPPER	10
6	10312	CAP, ASP V4 BASE	1
7	10340	CAP, MICROSHRADER	2
8	90807	CLAMP, ASPR V1 MOUNT	1
9	10326	CLAMP, INNER RAIL ONE SIDE	6
10	10352	CLAMP, OUTER RAIL ANTHRACITE	6
11	10349	CLAMP, OUTER RAIL IODINE	10
12	10324	HEAD, ASP V4 INNER SEAL	2
13	10351	HEAD, ASP V4 MAIN SEAL IODINE	4
14	13247	HEAD, ASP V4 MAIN SEAL ANTHRACITE	2
15	10339	HEAD, CABLE STOP	2
16	10348	LEVER, ASP CB RELEASE	2
17	10338	LEVER, ASP REMOTE RELEASE	2
18	10318	NUT, BASE	2
19	10328	NUT, RAIL CLAMP	2
20	10341	O-RING, 1.0X3	4
21	10309	O-RING, 1.5X18	20
22	10307	O-RING, 1.5X26	2
23	10331	O-RING, 1.5X3	10
24	12139	O-RING, 2.5X14	10
25	10334	O-RING, 2.5X22	4
26	10346	O-RING, 2.6X12.4J	10
27	10347	PIN, M3X24 SLOTTED SPRING	2
28	10316	RING, ASP GLIDE	10
29	10323	ROD, ASP V4 RELEASE	2
30	10343	SCREW, M5X10 DOG TIP SET	2
31	10337	SCREW, TORX 3X6	40
32	10330	SCREW, 3.5 PHILIPS PAN HEAD	2
33	10350	SCREW, ADJUSTER ORANGE	2
34	10342	SEAL, ASP URETHANE VALVE	10
35	10315	SHAFT, ASP COMPRESSION	2
36	10319	SPRING, TORSION	2
37	10320	SPRING, VALVE	1
38	10327	SPRING, RAIL CLAMP	2
39	10311	TUBE, ASP V4 OUTER 31.6	1
40	10310	TUBE, ASP V4 OUTER 30.9	1
41	10345	WASHER, 4X8	2
42	10336	WASHER, 8X12	2
43	10329	WASHER, ASP V4 VALVE	2
44	10322	WIPER, ASP V4 ROD	15
45	10308	VALVE, SHRADER CORE	10
46	12133	J4, COMPRESSION SHAFT	2
47	12129	J4, 31.6 OUTER TUBE	1
48	12128	J4, 30.9 OUTER TUBE	1
49	12138	J4 INNER HEAD	2
50	12131	J4 VALVE BODY	2
51	12132	OUTER RAIL GOLD	10
52	12130	MAIN SEAL GOLD	4



UNLESS OTHERWISE SPECIFIED  
DIMENSIONS ARE IN MILLIMETERS

TOLERANCES  
LINEAR =  $\pm 0.1$   
ANGULAR =  $\pm 1^\circ$

THIRD ANGLE PROJECTION



CAD GENERATED DRAWING,  
DO NOT MANUALLY UPDATE

APPROVALS		DATE
DRAWN	CRB	8/21/2009
CHECKED		
RELEASED		
MFG ENG	--	--
QUAL ENG	--	--



310 BROADWAY, LAGUNA BEACH, CA 92651  
TEL: (949) 464 9916 FAX: (949) 376 7010

JOPLIN DISTRIBUTOR KIT

SIZE	DWG./PART NO.	REV.
A	160269	-.03
SCALE 1:5		SHEET 1 OF 2

